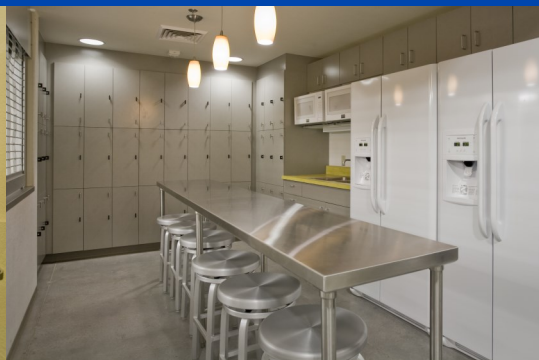




**Chrysalis Shelter for Victims of Domestic Violence, Inc.**  
**Annual Report**  
**Fiscal Year Ended June 30, 2017**



**LEADING OUR COMMUNITY TO BROAD-BASED SOLUTIONS  
TO PREVENT DOMESTIC ABUSE**



## DOMESTIC ABUSE

**THE NUMBERS ARE STAGGERING.** Every five minutes, Arizona law enforcement responds to a call involving domestic violence. It is the leading cause of injury to women of Arizona, and 1 in 4 women will find themselves the victim of abuse at some point in their lifetime. An even more serious fact is that the majority of women flee their abuser because their children are also being abused, thus perpetuating the cycle of violence.

- In 2016, 100 identified domestic violence related deaths occurred in Arizona, including 75 of those deaths occurred in Maricopa County
- 30 percent to 60 percent of domestic abuse offenders also abuse children in the household.

## CHRYSLIS

**OVER 35 YEARS AGO**, a woman opened up her home as a safe house for both women and children who had been victimized by domestic abuse. The shelter was appropriately named Chrysalis – defined as the growth that creates an independent being. Since that time, Chrysalis has been serving the needs of women, children and men throughout the Valley who are trying to break the cycle of violence and abuse.

Chrysalis' broad-based victims services take a clinical approach to addressing the root causes of domestic abuse from the perspective of the victim, the children, the extended family and the offender. Chrysalis' comprehensive victim resources are developed to promote self-sufficiency and to serve all populations of victims including women and the often overlooked child and male victims.

**Through comprehensive services, community collaborations, strong board and volunteer participation, and a fiscally responsible approach, Chrysalis is leading our community to broad-based solutions to prevent domestic abuse.**

- Chrysalis served over 1,357 individuals impacted by domestic abuse.
- 82 percent of organizational expenses went directly to services for victims of domestic abuse.
- 643 volunteers contributed 3,422 volunteer hours to Chrysalis.

*"Through the help of our community, board of directors and committed staff, Chrysalis is working hard to bring our comprehensive and innovative services to a greater number of victims of domestic abuse in our community."*

*Patricia Klahr - President/CEO*



*In 2016, via Patricia Klahr's organizational award through Virginia G. Piper Charitable Trust Piper Fellowship Chrysalis is embarking on the process of becoming a Trauma Certified Organization.*



## RESIDENTIAL SERVICES

**FIRST AND FOREMOST IS OUR EMERGENCY SHELTER**, Chrysalis provides a safe place for victims to escape the immediate threat of domestic abuse. Our residential Crisis Shelter houses up to 50 adults and children for up to 120 days. The Crisis Shelter has the ability to serve male adolescents up to age 18 as well as male and transgender victims of domestic abuse.

The Courage Campus' Supportive Services building offers residents services throughout their shelter stay. During their stay, residents receive individual, family and group counseling from licensed masters-level therapists, case management, assistance with job development, housing and financial referrals, medical services, parenting information, and other assistance based on the unique needs of the individual. Residents receive specialized clinical and non-clinical intervention, as well as an array of opportunities for healing. The child development center provides critical components to decreasing the intergenerational cycle of abuse, including early intervention and parenting education.

**IN ADDITION TO EMERGENCY SHELTER**, Chrysalis offers transitional housing facilities. The Transition Program provides independent apartment living and supportive services for women or men (with or without children) for up to 2 years. Residents who have successfully completed a 30-day emergency domestic abuse program and are in need of additional time to secure their future are eligible.

- Chrysalis' residential programs provided clients with 25,218 safe and secure bed nights through our emergency shelter and transitional housing program.
- Our Emergency Shelter served 360 victims of abuse.
- Transitional Housing served 43 victims of abuse.

## FAMILY OUTREACH CENTER

**FINDING A SAFE PLACE TO LIVE IS ONLY THE FIRST STEP** to breaking the cycle of abuse. The Family Outreach Center is a first for Arizona. Services provided at the Family Outreach Center include education about domestic abuse in the greater community, an advocacy program to help protect victims whose abusers are on probation, counseling and children's play therapy, as well as lay legal advocacy to help clients resolve issues such as orders of protection and child custody. Through the PAC/PEACE program we work with offenders seeking to prevent abuse in their current and former relationships.

- Provided Outpatient Counseling to 224 individuals.
- Provided victim and lay legal advocacy for 529 victims.
- Provided court-ordered offender treatment to 312 offenders.

# STATEMENT OF FINANCIAL POSITION

## Chrysalis Shelter For Victims of DV Statement of Financial Position SubType As of 6/30/2017

### Assets

#### Current Assets

Cash and Cash Equivalents	\$900,287.28	
Accounts Receivable	33,000.00	
Grants Receivable	169,013.56	
Prepaid Expense	14,282.59	
Total Current Assets		1,116,583.43

#### Property, Plant & Equipment

Property and Equipment, Net	\$6,254,568.08	
Accumulated Depreciation	(1,659,114.77)	
Total Property, Plant & Equipment		4,595,453.31

#### Other Assets

Other Assets	\$8,500.00	
Total Other Assets		8,500.00

<b>Total Assets</b>		<b>\$5,720,516.74</b>
---------------------	--	-----------------------

### Liabilities and Net Assets

#### Current Liabilities

Accounts Payable	\$26,020.08	
Accrued Expenses	96,143.20	
Deferred Revenue	2,204.50	
Deferred Revenue	1,000.00	
Total Current Liabilities		125,367.78

<b>Total Liabilities</b>		<b>\$125,367.78</b>
--------------------------	--	---------------------

#### Net Assets

Unrestricted Net Assets	\$5,029,397.61	
Temporarily Restricted Net Assets	709,873.00	
Current Year Net Assets	(144,221.45)	

<b>Total Net Assets</b>		<b>\$5,595,149.16</b>
-------------------------	--	-----------------------

<b>Total Liabilities and Net Assets</b>		<b>\$5,720,516.74</b>
-----------------------------------------	--	-----------------------



Emergency Shelter



Family Outreach Center

### FOLLOW US ON:



chrysalisaz

@chrysalisaz

Source: Independent Audited financial Statements and Supplementary Information for fiscal year ending June 30, 2017

## YOUR SUPPORT

**TO ACHIEVE OUR MISSION**, Chrysalis continues to seek support from private funding, individuals, foundations and corporations. We look forward to forging new partnerships with philanthropic leaders and institutions who share our commitment to preventing domestic abuse.

**We invite you to join us — because anyone can become a victim of domestic abuse — and everyone has a role in preventing it.**

### FOR MORE INFORMATION, DONATION AND VOLUNTEER OPPORTUNITIES:

Chrysalis Shelter for Victims of Domestic Violence, Inc.

2055 W. Northern Ave. • Phoenix, AZ 85021

P. (602) 955-9059 • F. (602) 955-0165 • 771 TTY • [www.noabuse.org](http://www.noabuse.org)

